

## BES Reduced Roof Surface Temperatures by 60%.

### Situation

This federal office facility needed to reduce the cooling load, along with the surface temperature of garage doors.

During project development, BES performed a site audit and proposed a Cool roof Coating solution as an energy efficiency measure.

### Federal Facility

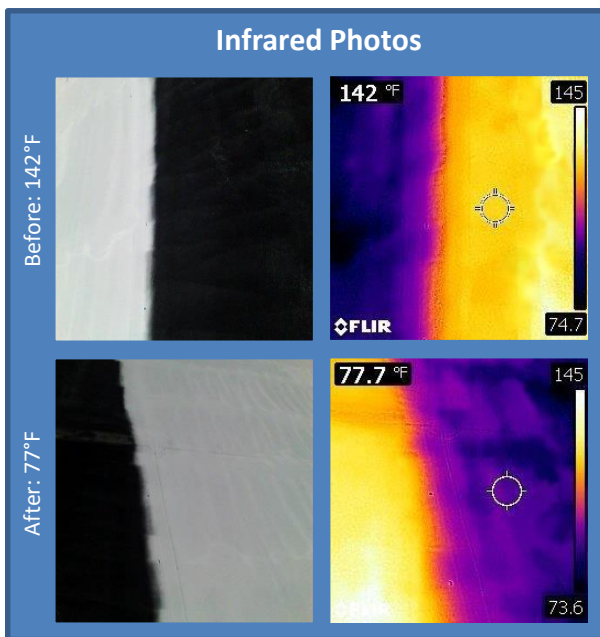
**Industry:** Homeland Security

**Location:** Yuma, AZ

**Facility Type:** Offices, Garages, & Warehouses

**Project Type:** Exterior Coatings

### Infrared Photos



Before: 138°F

After: 72°F



### Project Scope

BES prepared rooftop surfaces, then applied Cool Roof Coating to 85,000 square feet of roof, and to 10 overhead doors.

### About Cool Roof Coating

Cool Roof Coating protects your facility by rejecting up to 99% of solar heat. It reduces the cooling load, increases the expected life of the roof, and improves occupant comfort.

A space age formulation developed for NASA, Cool Roof Coating is a light-weight solution that merges microscopic ceramic beads with high-quality latex resin. When properly applied, it acts as an insulating layer which reduces facility cooling load and protects the roof from expansion/contraction stresses.

Each BES-installed Cool Roof Coating project comes with a 10-year manufacturer's warranty.

**Typical SPB is 4-7 Years**

BES is a leading national contractor serving North America's leading ESCOs and corporate clients. A single source partner for insulation and weatherization services, BES drives down energy consumption by applying insulation and sealing air infiltration gaps typically achieving annual savings of 10-15%. There are a number of qualities that set BES apart: quality of installation, professional project management, pre and post Installation documentation, flexible project scheduling, project warranties, M&V, and extensive experience with performance contracting.

BES is part of ECM Holding Group, a collection of conservation technology firms serving North America's leading ESCOs and corporate clients. For more information, please visit [www.energy-bes.com](http://www.energy-bes.com), or call 920.267.6111.